



Milton Roy® Metering Pumps: Complete line of hydraulically, mechanically, and pneumatically actuated diaphragm and packed plunger metering pumps. Pumps are available in cast iron, stainless steel, PVC, Kynar (PVDF), and various alloys. Capacities from 0.0081 GPH to 2657 GPH. Pressures up to 10,000+ PSIG. Multiplex arrangements available.



Ebara® Centrifugal Pumps: Horizontal end-suction, vertical multistage, and submersible centrifugal pumps in stainless steel and cast iron construction. Horizontal pumps to 30HP, vertical pumps to 50HP, submersible pumps to 500HP.



Wanner® Hydra-Cell™ High Pressure Pumps: Hydraulically actuated, positive displacement diaphragm pumps, with low-pulsation output. Pumps can run dry and handle abrasive slurry fluids. Capacities up to 45 GPM and 5000 psig.

Stan-Cor® Nonmetallic Pumps: ANSI-dimensional centrifugal pumps in PVDF and PTFE non-metallic construction. Available in sealed and sealless magnetic-drive configurations, in 7 different sizes. Flows up to 700 GPM.

Vector® Peristaltic Pumps: Peristaltic pumps available in a variety of sizes and materials. Flows to 160 GPM.



ARO® Air Operated Pumps and Air System Components: Complete line of air operated diaphragm and piston type fluid handling pumps in metallic and non-metallic construction, handling a wide variety of viscosities & fluids. ARO air system components include filters, regulators, lubricators, solenoid valves, and manifolds.



Seepex® Progressive Cavity Pumps: Progressive cavity pumps in a variety of materials for almost any application, including slurries, high-viscosity (up to 1,000,000 cP), metering, and 3A-approved sanitary service.

WILFLEY

Slurry and chemical pumps with sealless and sealed designs, available in a wide range of corrosion-resistant and hard metal alloys.



Nonmetallic, magnetically driven sealless centrifugal pumps, vertical immersion pumps, and drum pumps. Available in a variety of materials.



MTH Pumps

Regenerative turbine pumps for high-pressure applications and engineered canned motor pumps. Available in cast iron, bronze, and stainless steel.



Heavy duty submersible pumps for dewatering, wastewater, and slurry applications.

FMC Technologies

High pressure plunger pumps in 316 stainless steel, aluminum bronze, and iron. Pressures to 10,000+ PSI.



Heavy duty slurry pumps in vertical and horizontal arrangements.

PULSATron®



Solenoid-driven diaphragm and peristaltic metering pumps, non-metallic and stainless steel. Manual or external control. Flows to 25gph and pressures to 300psi.



Complete line of centrifugal pumps including single and multistage split case, vertical turbine, in-line, close-coupled, self-priming, ANSI, and API pumps.



Self-priming, trash, and hot oil pumps, available in cast iron, bronze, and stainless steel construction.



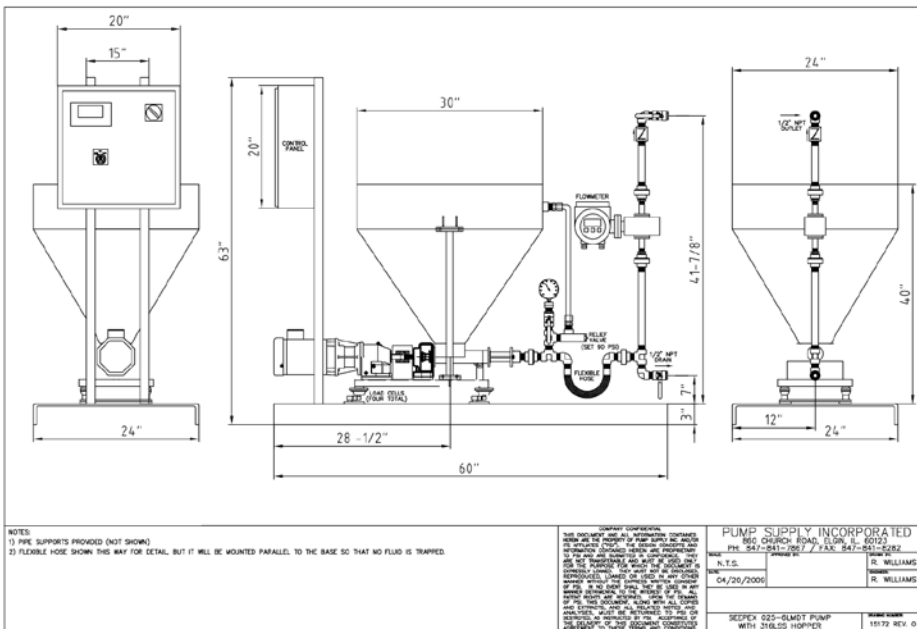
Pulsation dampeners, surge suppressors, and gauge isolators. Available in a range of materials and configurations, including high pressure and sanitary construction.



Vertical and horizontal centrifugal pumps in varying sizes and pit depths. Cast iron, 316 stainless steel, and alloys.



Non-metallic, magnetically driven, seal-less centrifugal pumps in a variety of materials.



Systems and Fabrication Services: Pump Supply Incorporated offers custom turnkey pump systems built in-house to meet your specifications, whether simple or complex. All systems are fully tested prior to shipment. CAD drawings and full documentation services are available. Applications include chemical injection, chemical transfer, water pressure boost, machine tool coolant, cooling tower, boiler feed, polymer make-up, and centralized pressure wash.



860 Church Road, Elgin, Illinois 60123

Phone 847-841-PUMP (7867) – Fax 847-841-8282

www.pumpsupplyinc.com